



## IBAK KW 500

### Camera Cable and Winch

Motordriven camera cable winch

Camera cable length: 450 m (1450 ft.)

Integrated swivel boom

Automatic level wind

Traction regulating device

MODULAR II compatible

# IBAK KW 500



**IBAK KW 500** is a stationary, motor-driven cable winch and holds up to 450 m / 1450 ft. of camera cable. The powerful motor and an automatic winding device ensure level winding of the camera cable. A workplace light can be installed on the boom, which has a deflection unit and an integrated length measuring device. The cable winch and the auxiliary steel rope winch for safe and easy introduction of the camera tractor into the manhole can be controlled from the rear vehicle section with the remote control unit. The traction regulating device integrated into the winch ensures optimum performance in all operating conditions and synchronises cable winch and camera tractor operation.



IBAK remote control for KRA and steel rope winch

## System Technical Data:

### Camera cable

- 450 m (1450 ft.), cable type: 626/11; sheath resistant to usual constituents of municipal wastewater
- 12 pole pressure-watertight connector with high quality pull relief, protection class: IP68

### Cable winch

- Width / height / depth: approx. 620/790/800 (1670) mm (24.43/31.13/31.52 (65.8) in.)
- Weight without cable approx. 130 kg; weight with 450 of cable type 626/11: approx. 205 kg
- Swivel boom
- Length counter: dm
- Power requirement: 95VDC/500W
- Steel rope winch: 24VDC/240W
- Remote control
- Manual operation possible
- Steel rope winch
- EMERGENCY STOP switch

### Accessories:

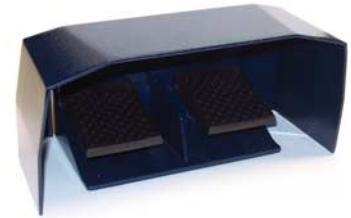
- Workplace light halogen or xenon
- Foot-operated switch

### Options

- Camera cable, with connector, for EEx operation
- PANORAMO fibre optic cable



IBAK Xenon workplace light



IBAK foot-operated switch for operation of steel rope winch



IBAK KKD 12 camera connector



IBAK KKD 12 camera connector with fibre optic cable for PANORAMO system



**IBAK** Helmut Hunger GmbH & Co. KG  
Wehdenweg 122 · 24148 Kiel · Germany  
Tel. +49 (0) 431 7270-0  
Fax +49 (0) 431 7270-207  
info@ibak.de · www.ibak.de